

You may use the information and images contained in this document for non-commercial, personal, or educational purposes only, provided that you (1) do not modify such information and (2) include proper citation. If material is used for other purposes, you must obtain written permission from the author(s) to use the copyrighted material prior to its use.



WHAT



WHERE



HOW

**Planning for
Community
Resilience**



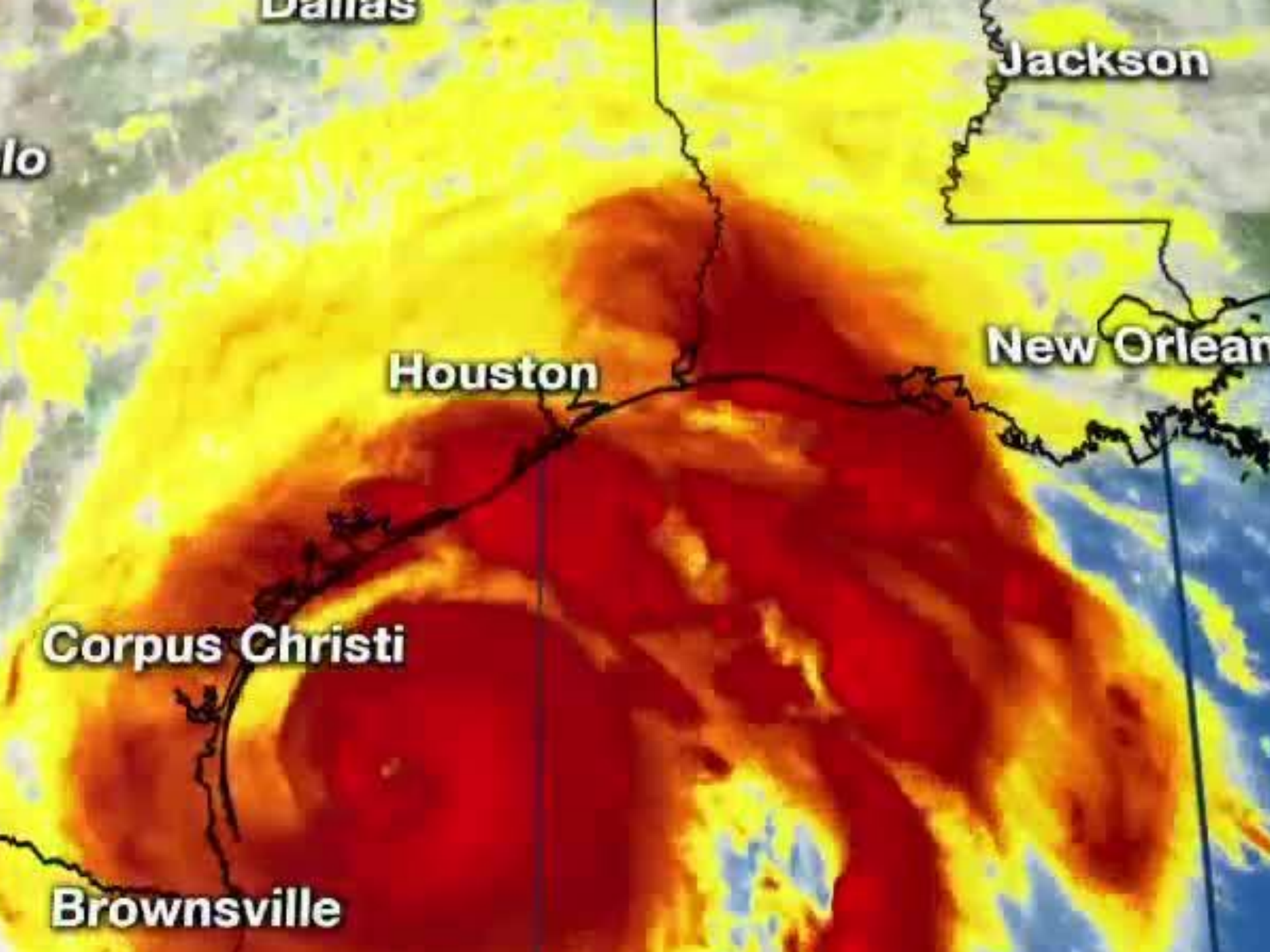
“No amount of prevention could have prevented this kind of flooding.”

“A strong floodplain ordinance would have changed everything. We would have been a city with an ordinance that minimized who got flooded.”



<http://www.berkshireeagle.com/stories/from-the-berkshires-to-houston-harveys-effect-is-felt,517894>





Dallas

Jackson

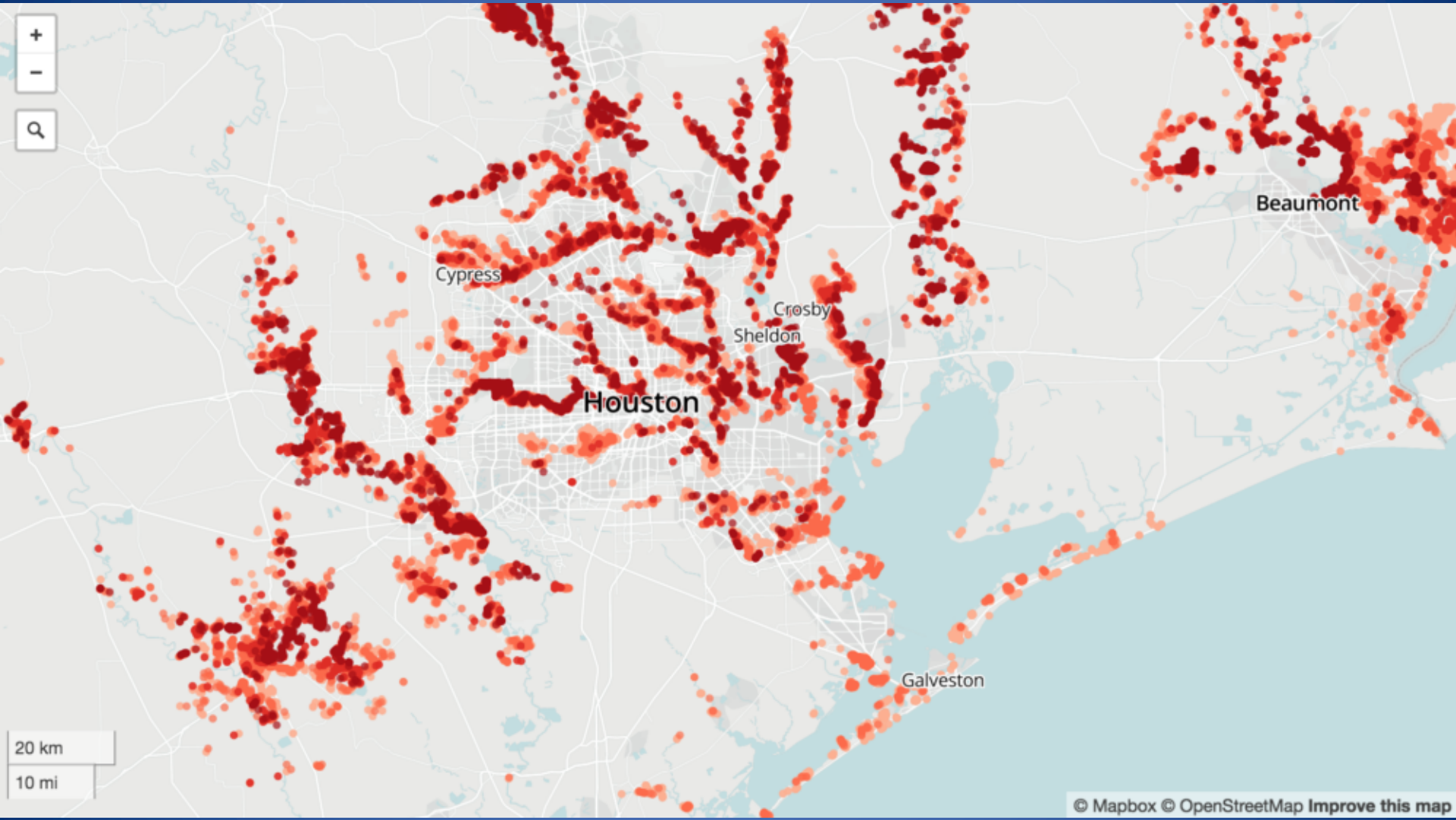
lo

Houston

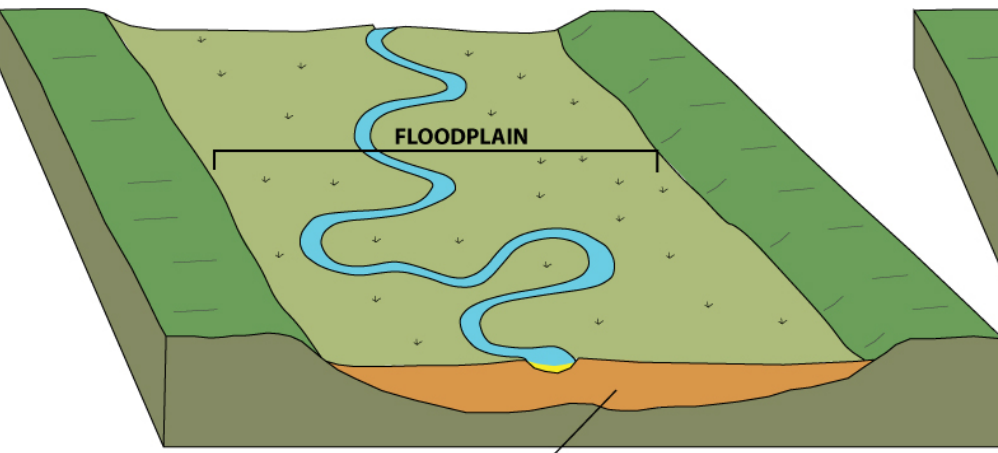
New Orleans

Corpus Christi

Brownsville

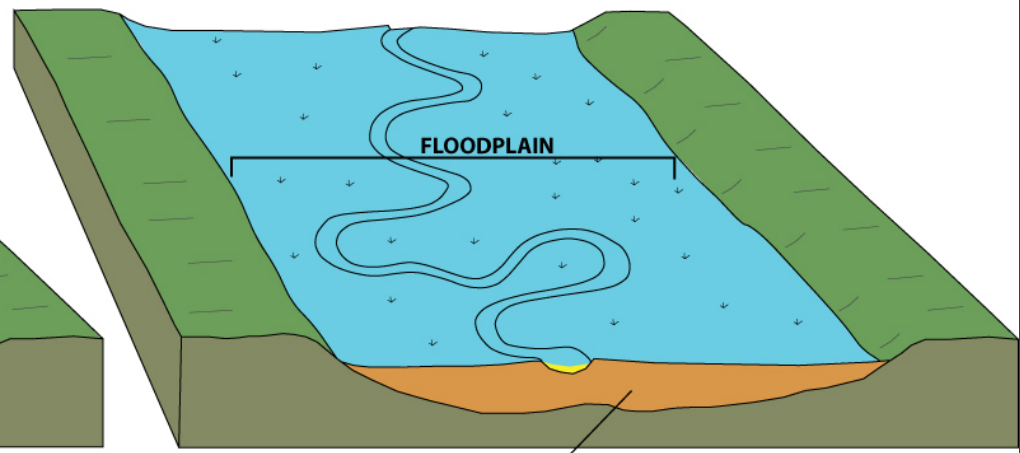


NORMAL CONDITIONS



older river channel and floodplain sediments

FLOOD CONDITIONS



older river channel and floodplain sediments

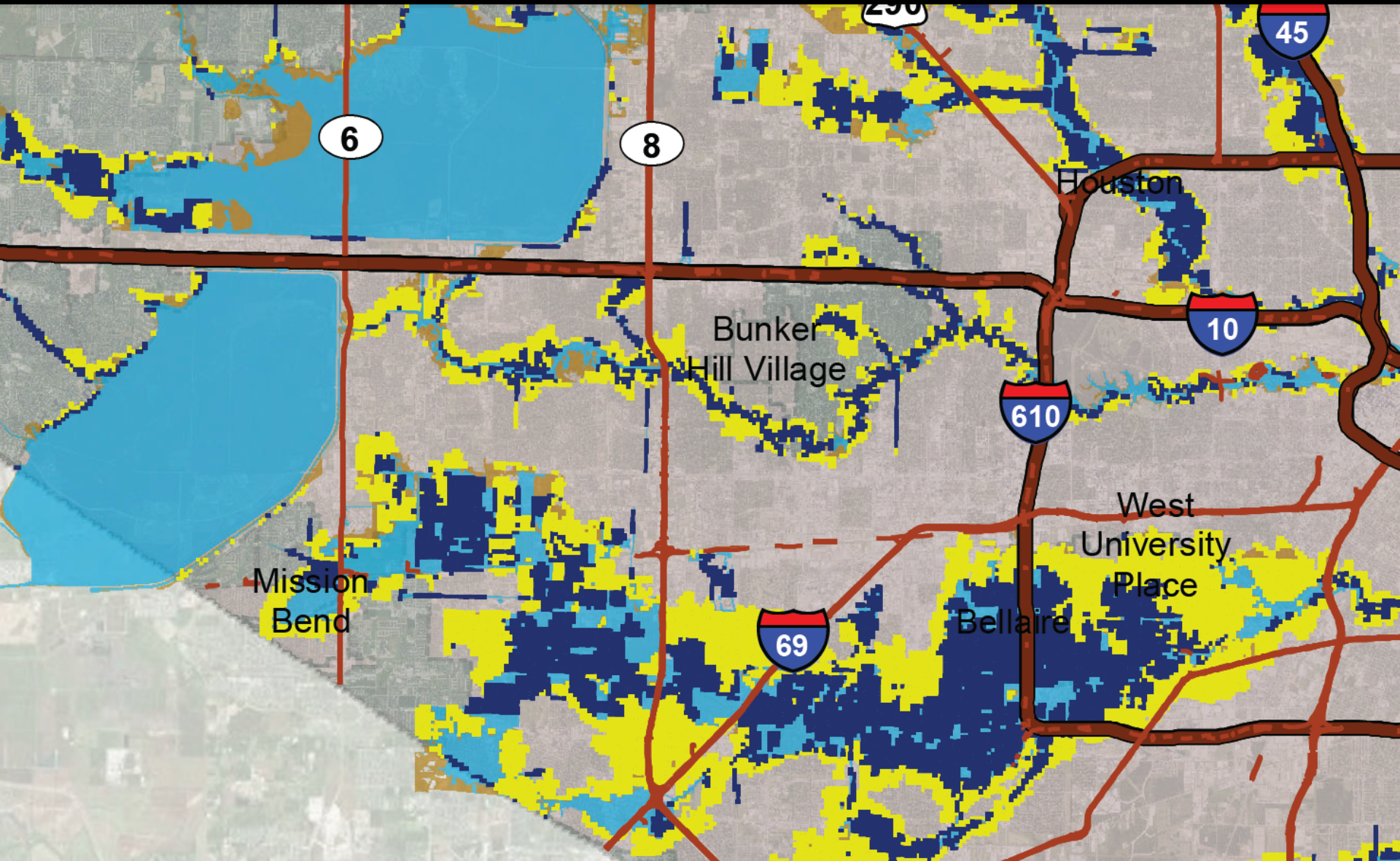


Moral Hazard

Engineering Resilience Fail Safe

Ecological Resilience Safe Fail





6

8

250

45

Houston

10

Bunker Hill Village

610

Mission Bend

West University Place

69

Bellaire



Elevate



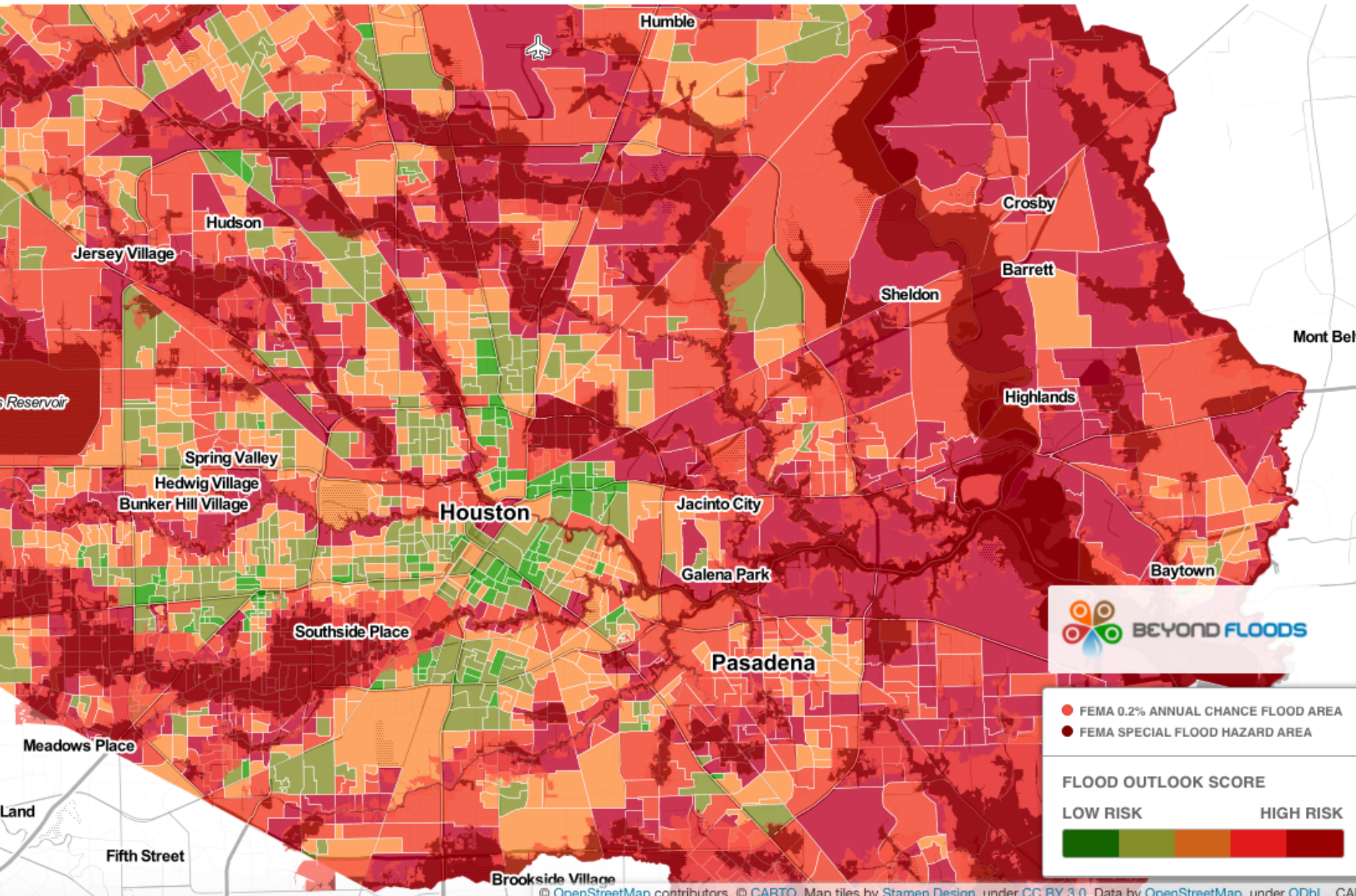
Evacuate

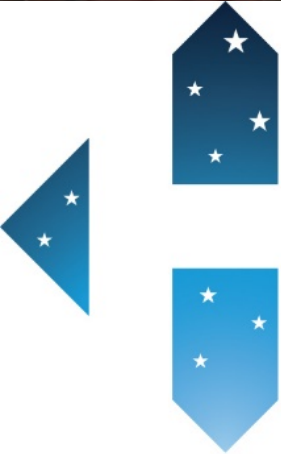


Dedicate









HOUSTON

THE CITY THAT *EMBRACES ITS LIMITS*

