

## Using a PTZ Camera with Zoom

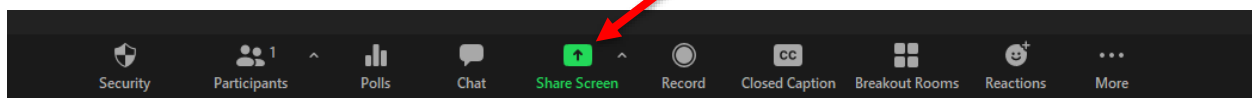
As the university continues to add PTZ cameras in classrooms across campus, many faculty members will likely want to use them as part of their Zoom-based lecture recordings or class meeting live streams. As a reminder, PTZ is simply an acronym for point-tilt-zoom. Instructors in PTZ camera-equipped classrooms can move the camera left or right (pan), up or down (tilt), and closer or farther (zoom). Instructors can operate the camera's PTZ controls using the touchscreen panel near the teaching workstation. For more information about PTZ camera essential operation, please review the Point-Tilt-Zoom (PTZ) Camera Overview support document.

### How Does a PTZ Camera Work in My Zoom Meeting?

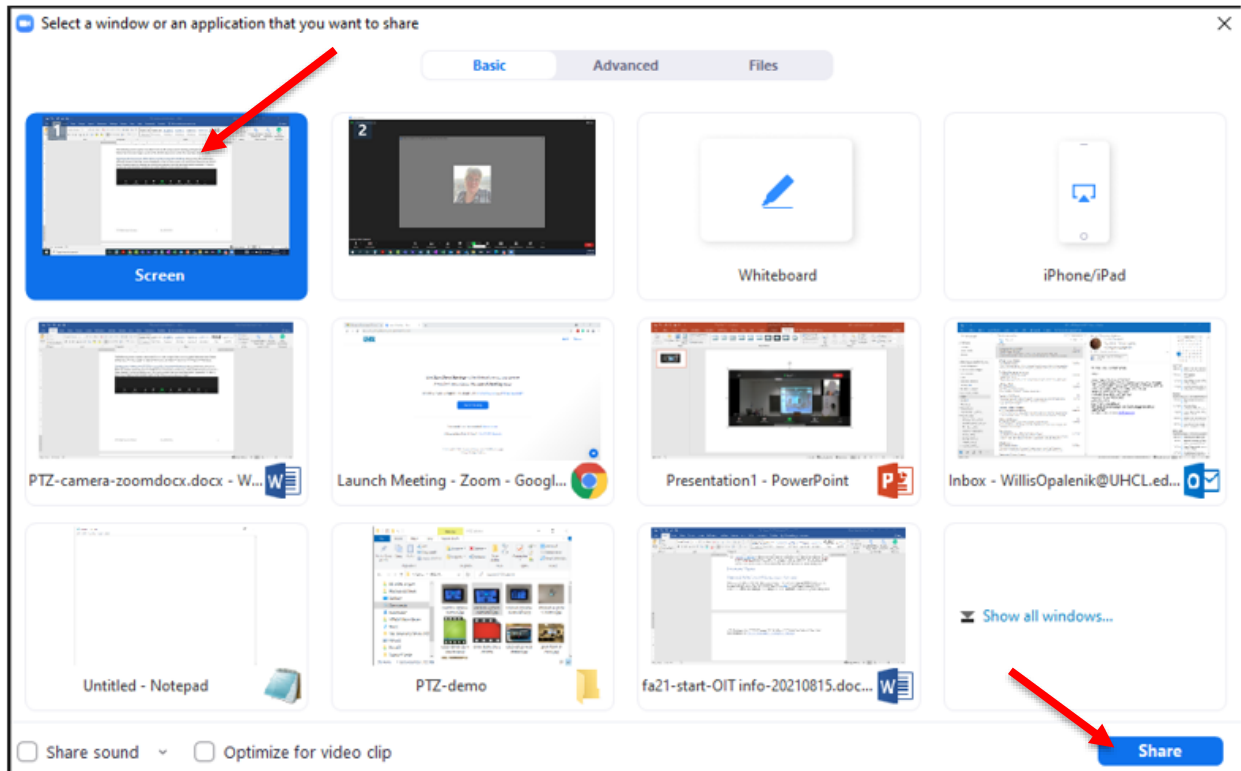
When you host a Zoom meeting, other participants usually see either video of you from your local computer camera (if you have the video option turned on), or they will see a still representation of yourself. When the PTZ camera is on in a room from where you are hosting a Zoom meeting or recording, whatever the camera sees is what the other Zoom participants see coming from you automatically. An off-campus Zoom meeting participant took the following screen capture from their iPhone. Notice that the main image is a broad view of the B1104 classroom in which the meeting is being hosted.



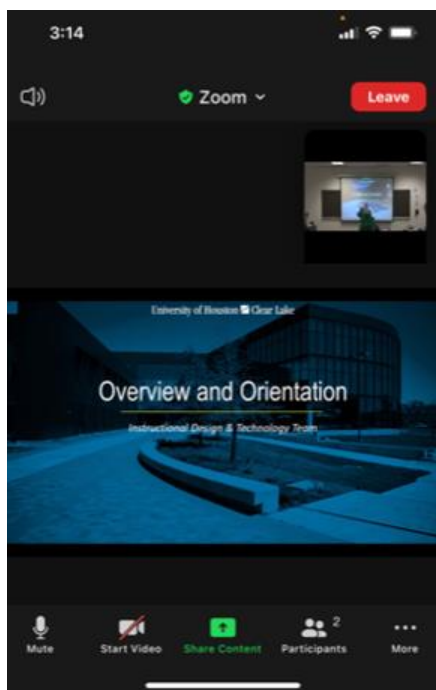
**Showing the Classroom (PTZ View) and the Computer Desktop.** Because the PTZ camera has difficulty rendering content displayed on the in-class screen, we recommend using Zoom's Share Content option to display any critical information from the teaching station computer that you have shown on the screen for your in-person attendees. To do so, begin by locating and clicking the Share Content icon at the bottom of your Zoom screen.



At the resulting share options screen, click the Screen image and click the Share button (lower right corner).



Your off-campus Zoom participants should now see something similar to the following screen capture, with the shared screen (in this example, a PowerPoint) in full-screen view and the PTZ camera view of the classroom in the upper right corner. Participants can easily switch which of these is their full-screen view, as needed. Similarly, as the instructor or host, you can switch between showing content from your computer to showing the classroom via the PTZ camera by sharing and unsharing your computer screen.



## Need More Help?

As you can see, there isn't much that an instructor needs to learn or do in a PTZ camera-equipped classroom to enable remote learners to see and hear you in a UHCL classroom. For more information about using Zoom with PTZ classroom cameras, don't hesitate to contact the UHCL Support Center, and a member of our OIT staff will be assigned to follow up with you.

Support Center  
281.283.2828  
supportcenter@uhcl.edu